

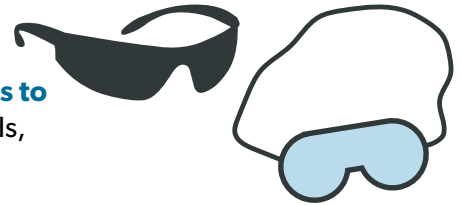
Personal Protective Equipment (PPE)

Service Management Systems is dedicated to providing a safe and healthy working environment and to following operating practices that will safeguard all employees and comply with OSHA standards. One easy step toward a safe work environment includes ensuring employees wear Personal Protective Equipment (PPE). Below are a few of the standard PPE pieces used throughout the janitorial/cleaning industry. Check them out to see how your employees can be safer in the workplace!

1

Safety Glasses and Goggles

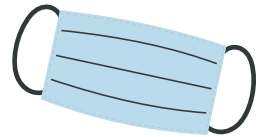
Both **safety glasses** and **safety goggles** should be offered **in styles to fit over eyeglasses**. Eye hazards, such as flying debris and chemicals, can be a real threat to employees not wearing the proper PPE.



2

Facemasks

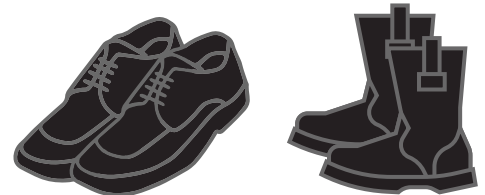
Many locations require face masks to be worn the entire time you work. If you are at one of these locations, **please use the proper techniques for putting on and taking off your facemasks per the CDC Guidelines**.



3

Appropriate Footwear

Black, slip resistant shoes with rubber soles should be worn **by employees at all times while working indoors** to help with slips and falls. Depending on the type of work being performed, waterproof or insulated boots may also be needed.



4

Gloves

Latex gloves should be worn at **all times** while working with cleaning products, to protect your hands from things like allergic reactions or skin sensitivity to the cleaning products. Non-latex gloves should also be provided, when needed.



5

Protective Winter Clothing

Wool or synthetic materials are best, as these can remove moisture and help retain body heat, even when wet. Cotton, on the other hand, can get soaked with sweat and make the wearer colder. These layers should also **not be too tight**, as tight clothing can restrict movements and decrease the insulating effect of the layers.



The decision to wear PPE is ultimately up to you and your employees, however **all employees** should wear the appropriate PPE, when necessary. Also, during cold weather, cold stress is a real thing. It's better to prepare **ahead of time** than to deal with injuries and illnesses later!

Get Started

At SMS, safety is our top priority and we want to help make it yours, as well! To learn more about our Safety Matters program and how our operations processes can improve your facility, contact us at info@smsclean.com.